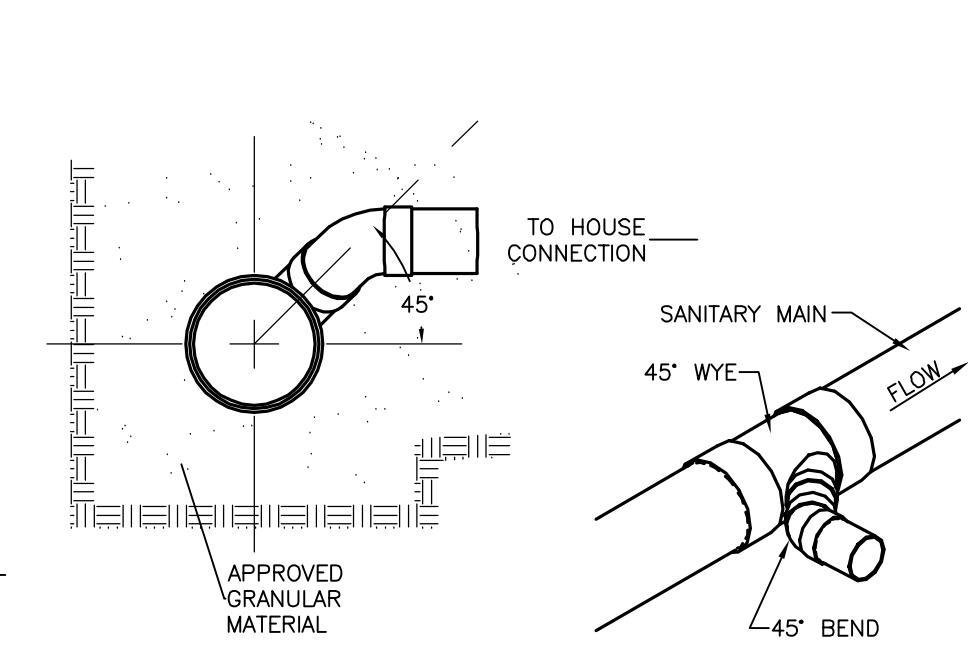
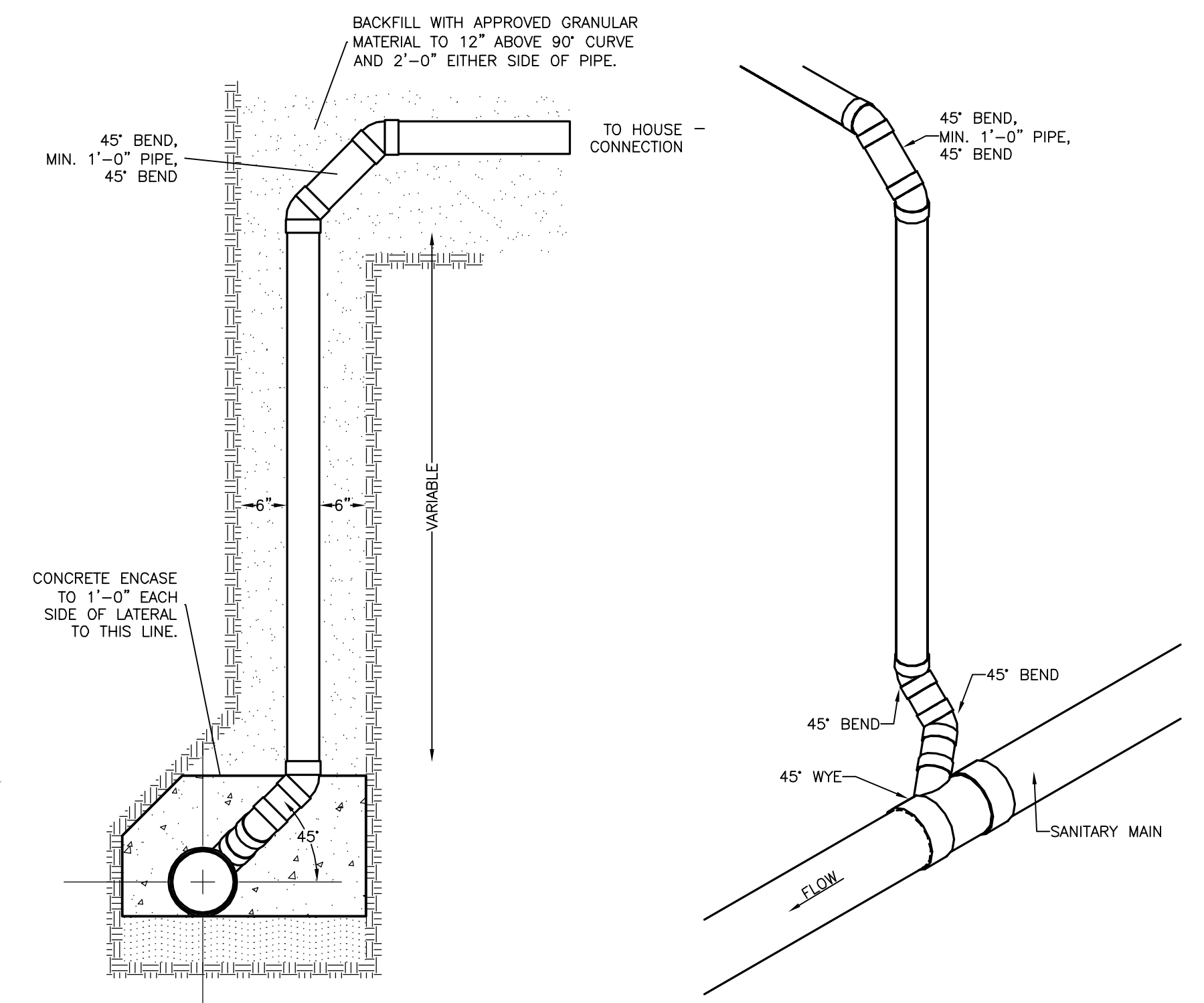


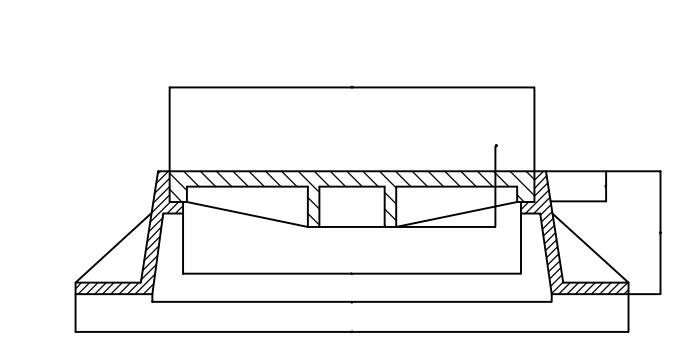
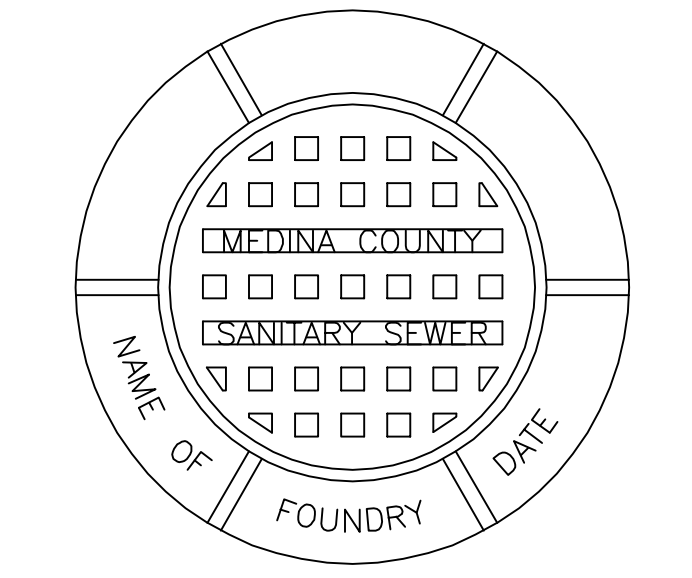
**TYP. SEWER CONNECTION MARKER DETAIL**  
(TO BE PLACED AT THE END OF EVERY SANITARY LATERAL)



**WYE DETAIL**



**ALTERNATE RISER DETAIL**



**MANHOLE COVER & FRAME**

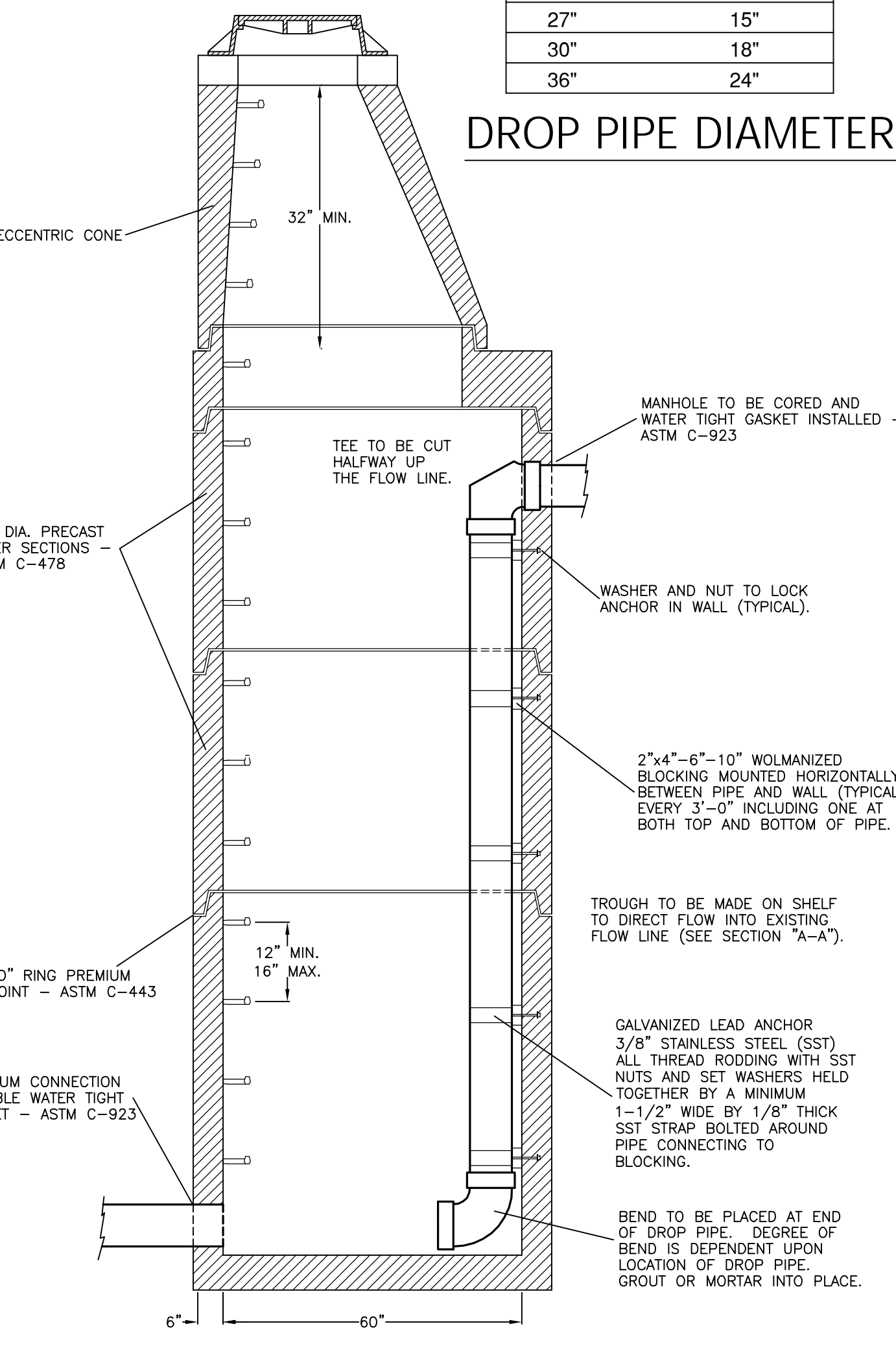
**STANDARD SANITARY MANHOLE**

PIPE SIZE	INSIDE DIA. OF MANHOLE	TYPE OF MANHOLE
8"-30"	48"	PRECAST
36"-48"	60"	PRECAST
54"-60"	72"	PRECAST
72"-84"	96"	PRECAST
90"-UP	--	BRICK

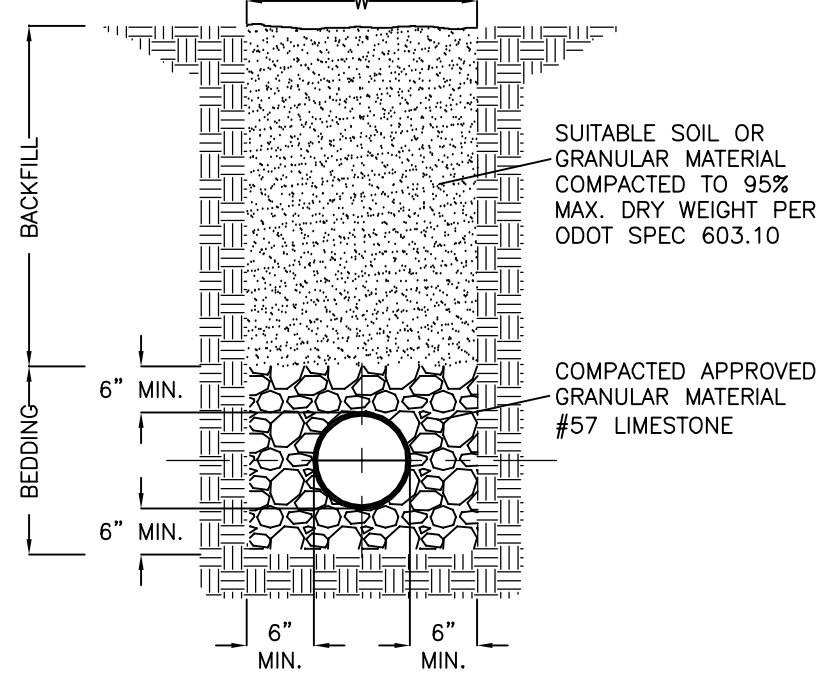
**MANHOLE DIAMETER**

PIPE SIZE	DROP PIPE SIZE
8"-10"	6"
12"-15"	8"
18"-21"	10"
24"	12"
27"	15"
30"	18"
36"	24"

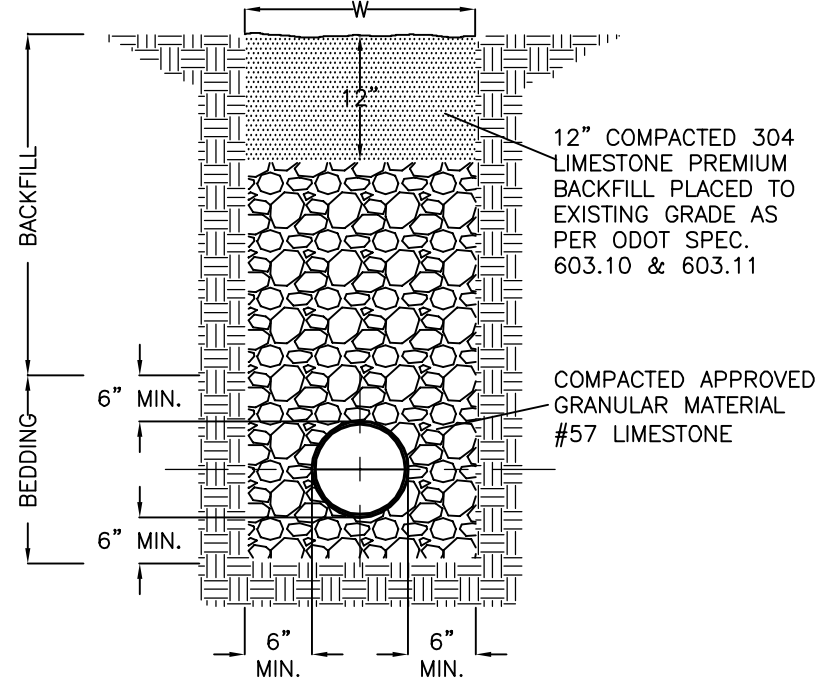
**DROP PIPE DIAMETER**



**INSIDE DROP MANHOLE**



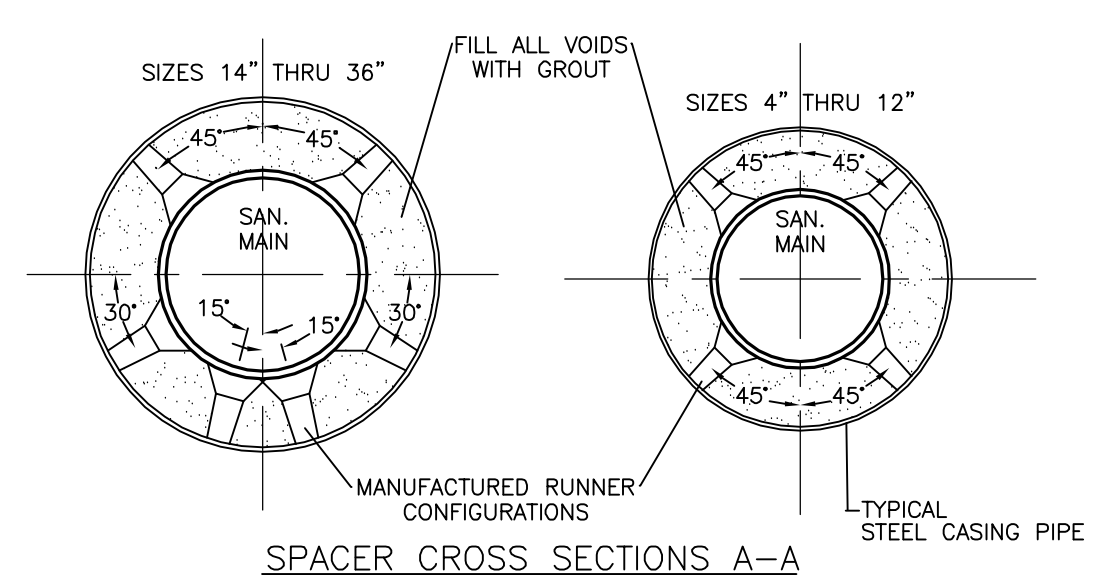
**TYPICAL TRENCH DETAIL FOR PVC PIPE**



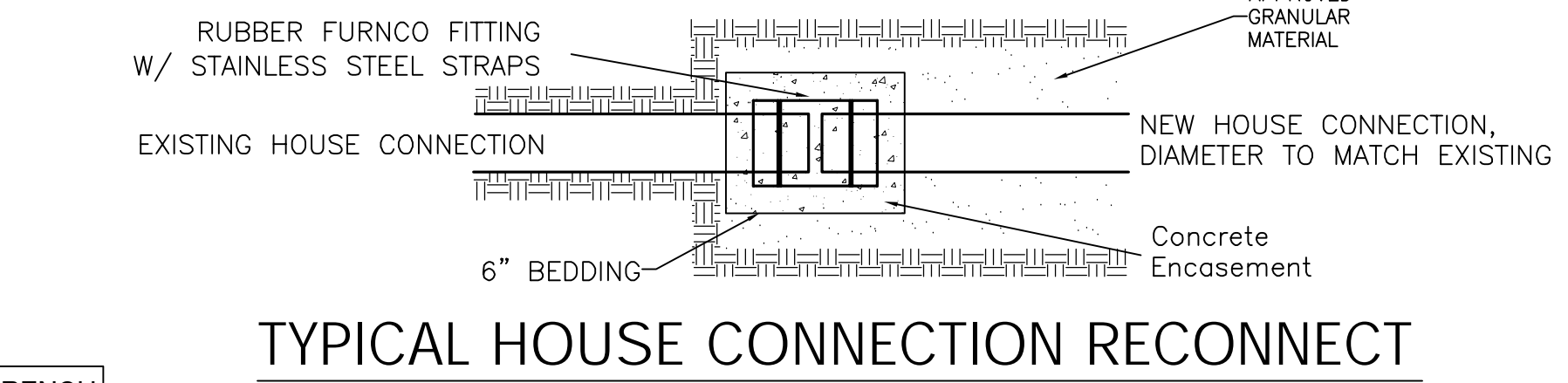
**TYPICAL TRENCH DETAIL PVC PIPE FOR AREAS UNDER AND WITHIN THREE (3) FEET OF PAVEMENT**

PIPE SIZE	MAX. TRENCH D	MAX. TRENCH W
8"-15"	3'-0"	3'-0"
18"	3'-6"	3'-6"
21"	3'-6"	3'-6"
24"	4'-0"	4'-0"
27"	4'-0"	4'-0"
30"	4'-6"	4'-6"
36"	5'-0"	5'-0"
42"	5'-6"	5'-6"
48"	6'-0"	6'-0"
54"	7'-0"	7'-0"
60"	7'-6"	7'-6"
66"	8'-0"	8'-0"
72"	8'-6"	8'-6"
84"	9'-6"	9'-6"
90"	10'-0"	10'-0"
96"	10'-6"	10'-6"
102"	11'-0"	11'-0"
108"	12'-0"	12'-0"
114"	12'-6"	12'-6"
120"	13'-0"	13'-0"

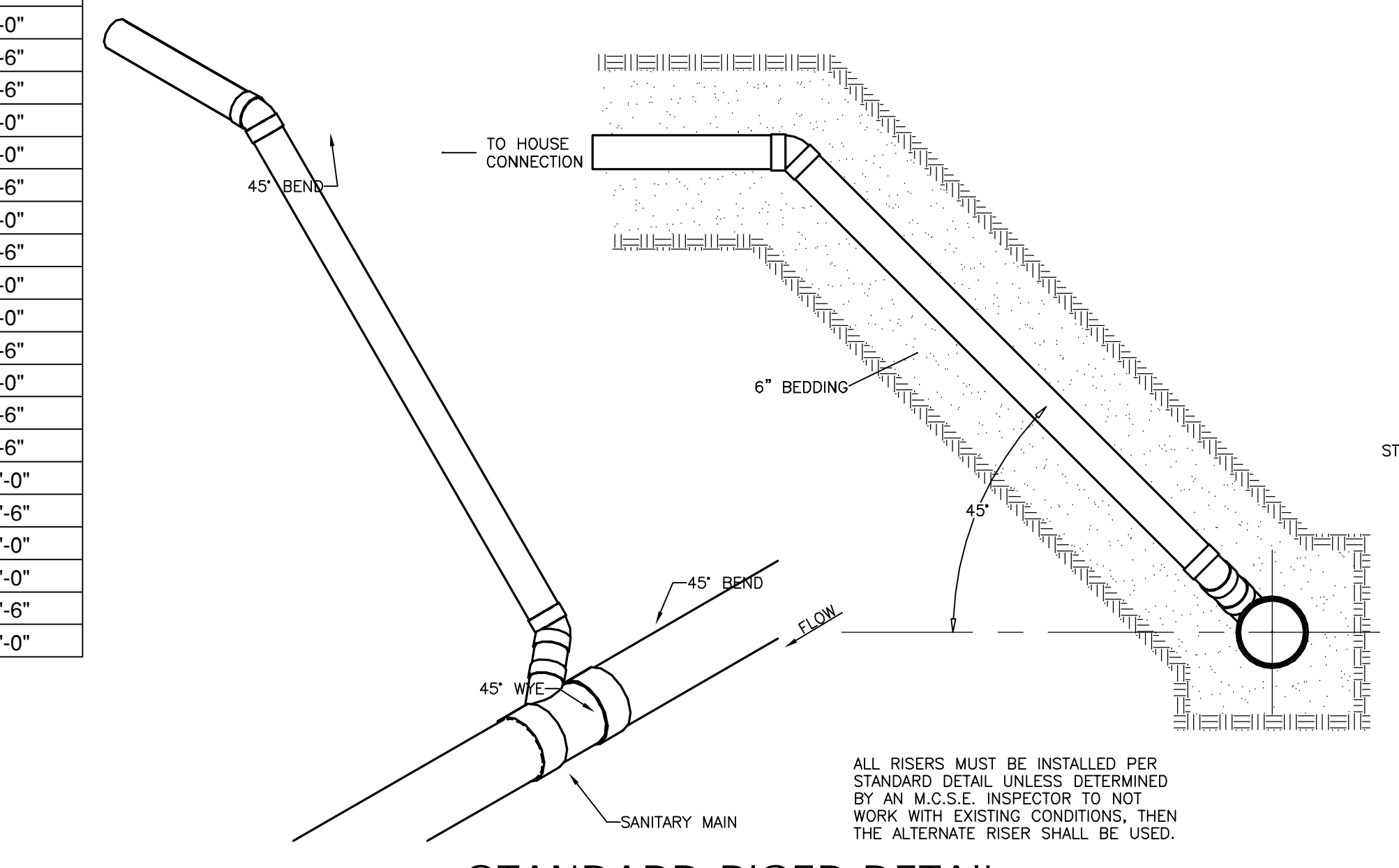
**TYPICAL TRENCH SECTION**



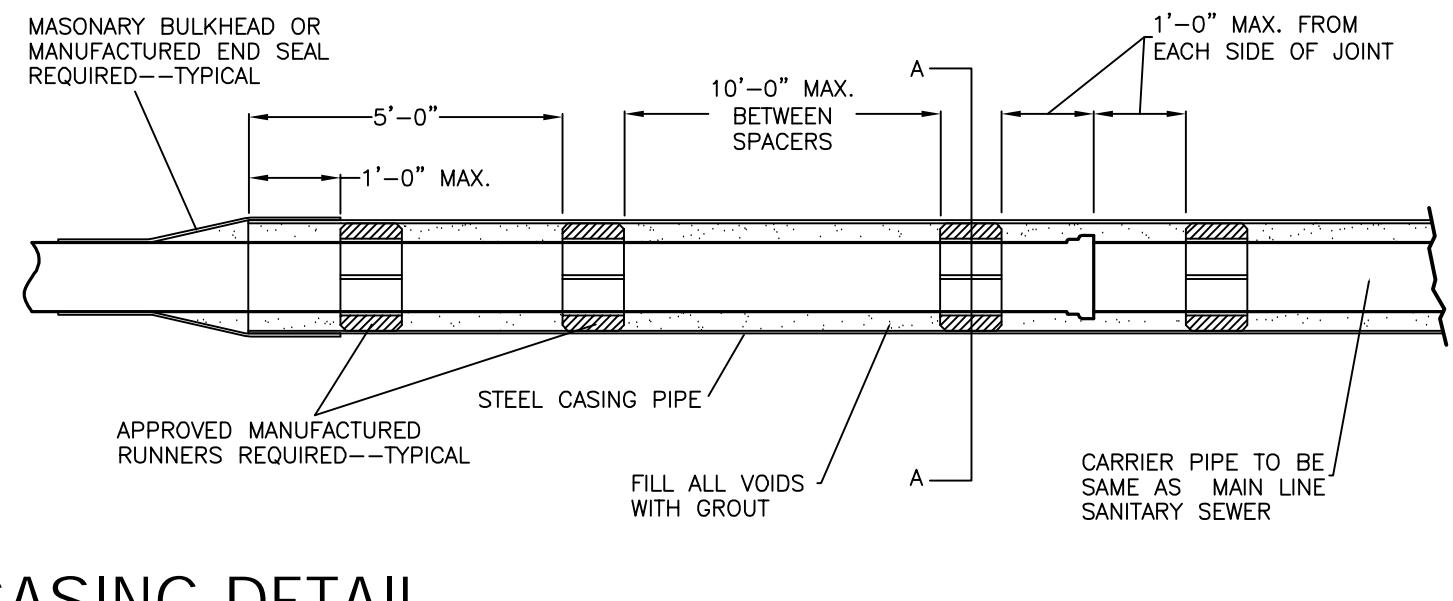
**SPACER CROSS SECTIONS A-A**



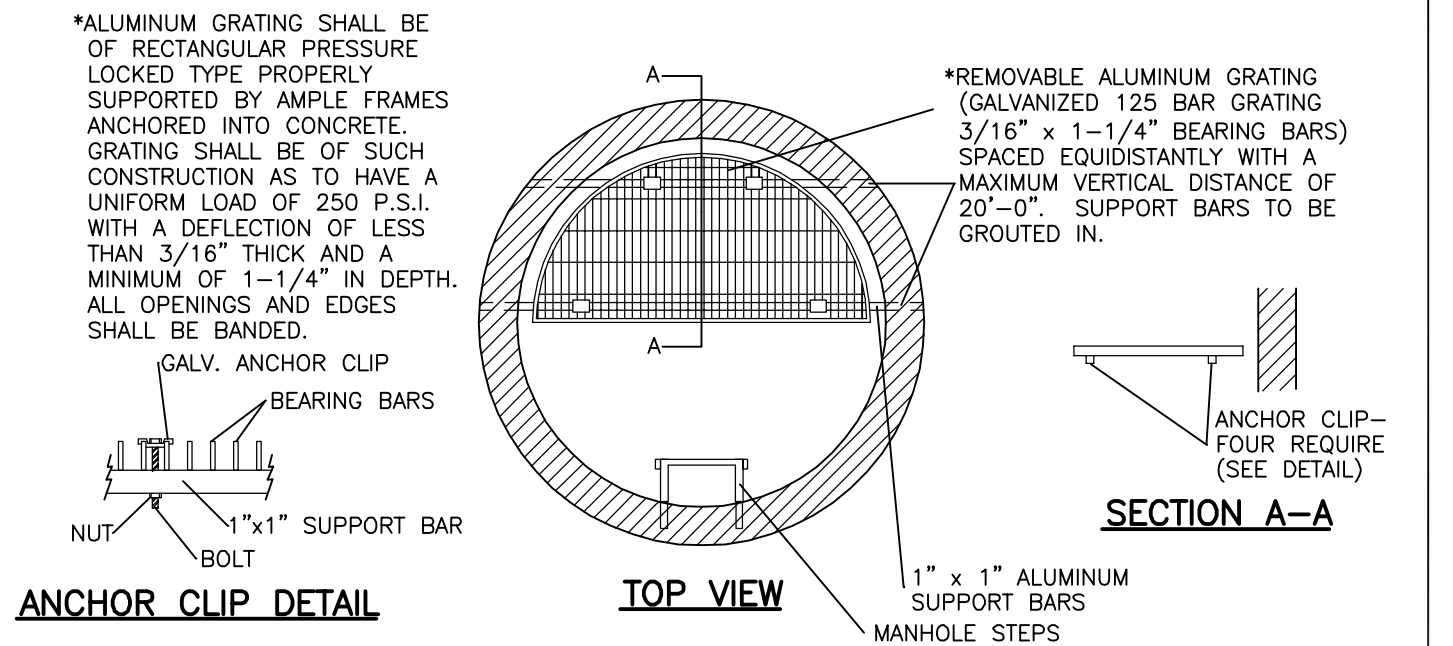
**TYPICAL HOUSE CONNECTION RECONNECT**



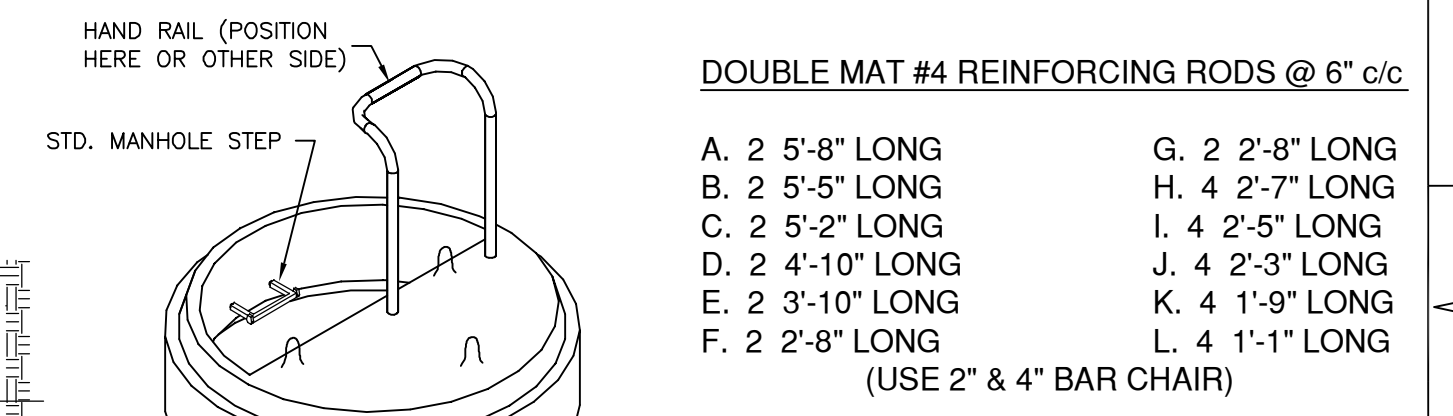
**STANDARD RISER DETAIL**



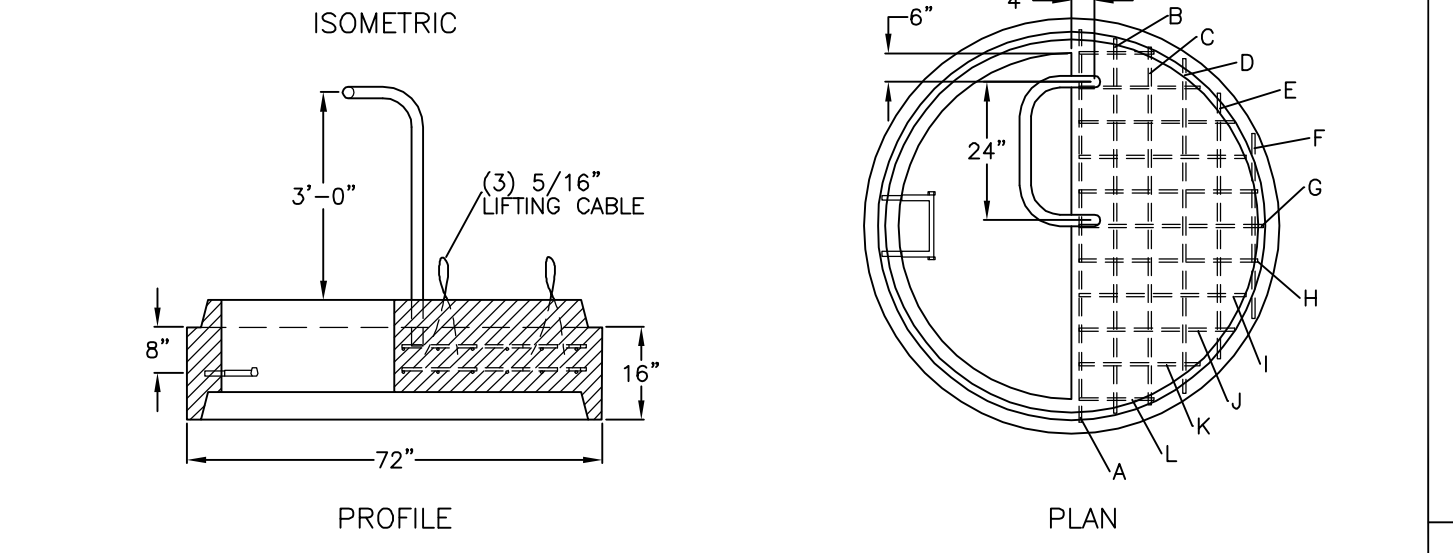
**CASING DETAIL**



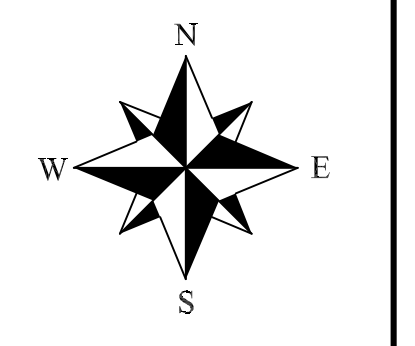
**STD. 48" MANHOLE GRATING DETAIL**



**STD. 60" MANHOLE LANDING DETAIL**  
(MACK INDUSTRIES, INC. 5'-0" DIAMETER LANDING RISER OR APPROVED EQUAL)

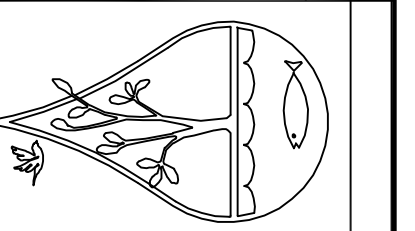


**STD. 60" MANHOLE LANDING DETAIL**  
(MACK INDUSTRIES, INC. 5'-0" DIAMETER LANDING RISER OR APPROVED EQUAL)



COUNTY: MEDINA	TOWNSHIP: VARIOUS	DATE: AUGUST 2010	REV.
DRAWN BY: JS	REVIEWED BY: N/A / N/A	SCALES: N/A / N/A	DESCRIPTION
2/27/2013	Updated PVC trenching details		DATE

**- SANITARY SEWER STANDARDS -**



PLAN PREPARED BY:  
**MEDINA COUNTY SANITARY ENGINEER**  
JAMES F. TROJKE, P.E.  
701 WEST SMITH RD.  
MEDINA CITY, OHIO 42366  
(303)725-9585 - (303)225-3113

PROJECT NUMBER

SHEET NUMBER

/